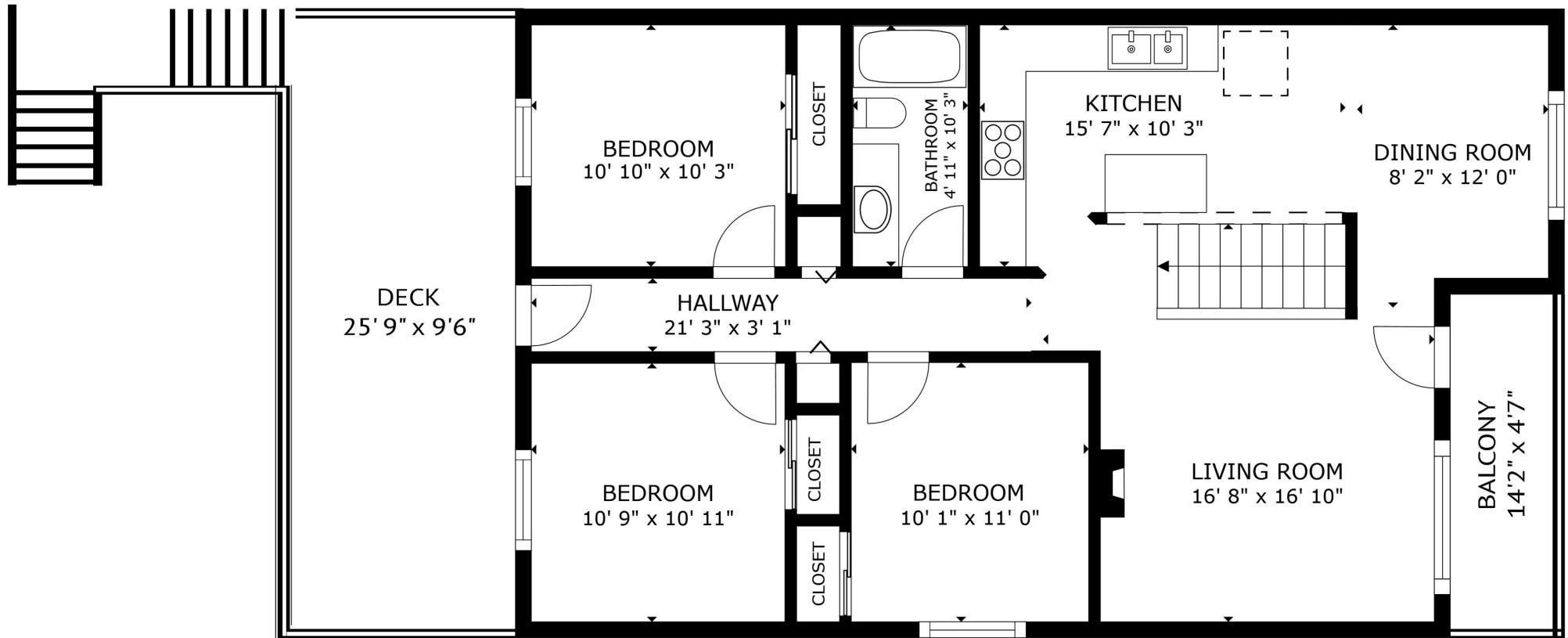


1765 AUSTIN AVENUE COQUITLAM BC
 MAIN: 1057 sq. ft. UPPER: 1113 sq. ft.
 TOTAL: 2170 sq. ft.

GARAGE: 285 sq. ft. PATIO: 196 sq. ft.
 DECK: 256 sq. ft. BALCONY: 70 sq. ft.
 EXTRAS TOTAL: 807 sq. ft.

⚠️ SIZES AND DIMENSIONS ARE APPROXIMATE, ACTUAL MAY VARY





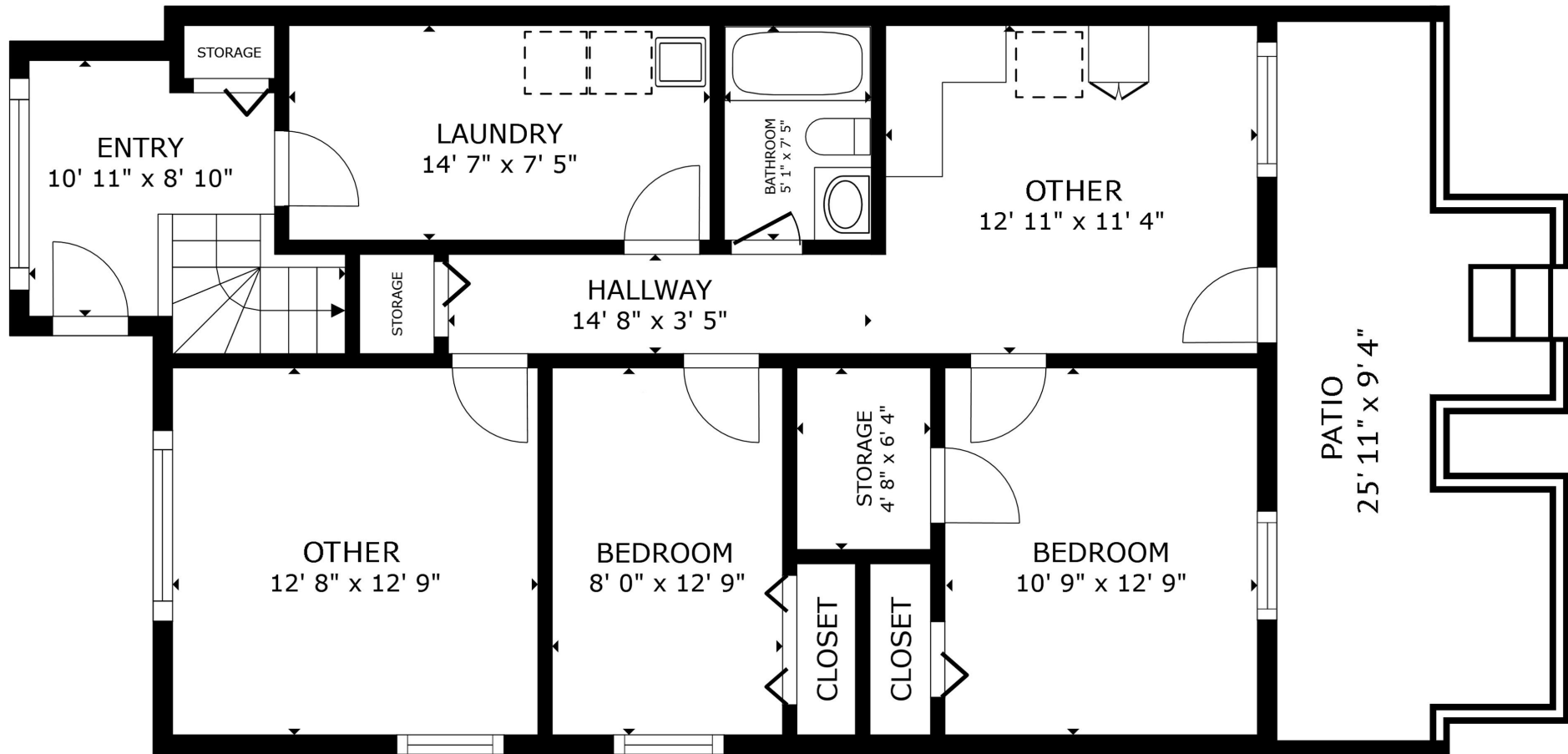
UPPER

1765 AUSTIN AVENUE COQUITLAM BC
 MAIN: 1057 sq. ft. UPPER: 1113 sq. ft.
 TOTAL: 2170 sq. ft.

GARAGE: 285 sq. ft. PATIO: 196 sq. ft.
 DECK: 256 sq. ft. BALCONY: 70 sq. ft.
 EXTRAS TOTAL: 807 sq. ft.

⚠️ SIZES AND DIMENSIONS ARE APPROXIMATE, ACTUAL MAY VARY



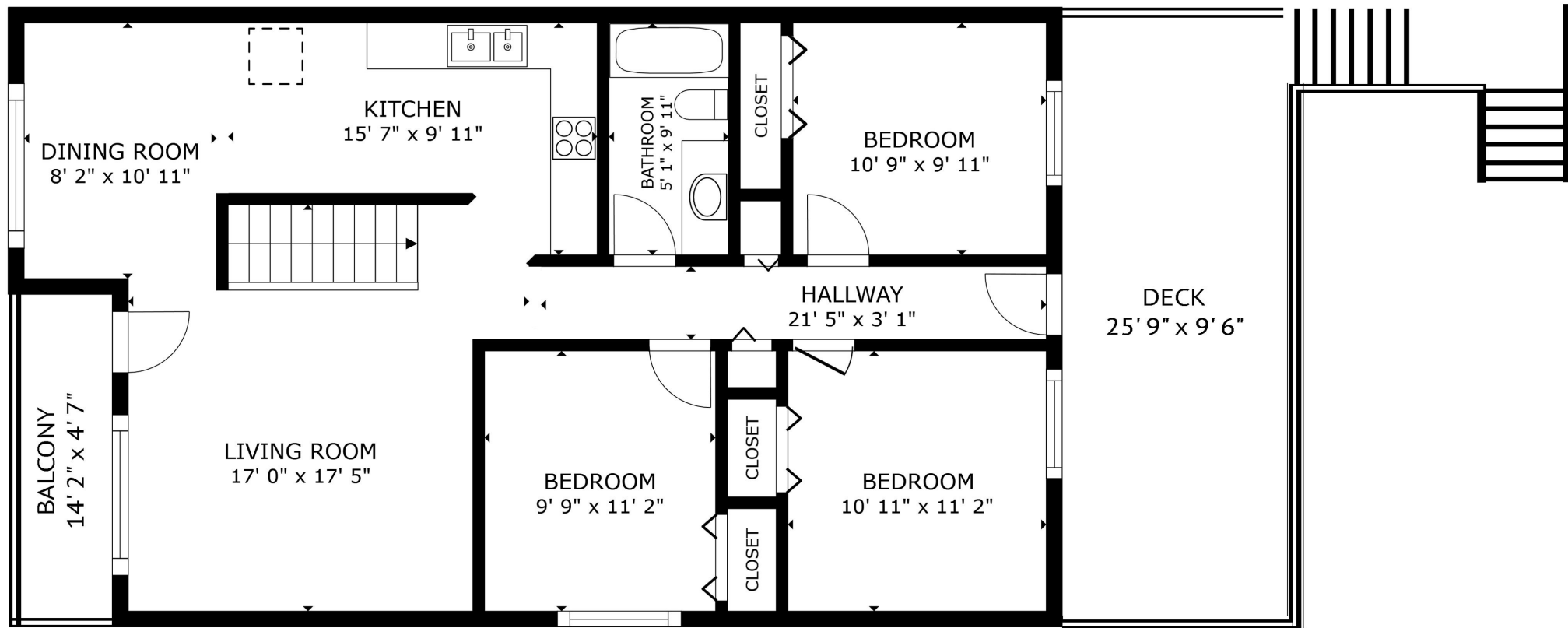


MAIN

1769 AUSTIN AVENUE COQUITLAM BC
 MAIN: 1058 sq. ft. UPPER: 1117 sq. ft.
 TOTAL: 2175 sq. ft.

PATIO: 196 sq. ft. DECK: 256 sq. ft.
 BALCONY: 70 sq. ft.
 EXTRAS TOTAL: 522 sq. ft.

SIZES AND DIMENSIONS ARE APPROXIMATE, ACTUAL MAY VARY



UPPER

1769 AUSTIN AVENUE COQUITLAM BC
 MAIN: 1058 sq. ft. UPPER: 1117 sq. ft.
 TOTAL: 2175 sq. ft.

PATIO: 196 sq. ft. DECK: 256 sq. ft.
 BALCONY: 70 sq. ft.
 EXTRAS TOTAL: 522 sq. ft.

SIZES AND DIMENSIONS ARE APPROXIMATE, ACTUAL MAY VARY

