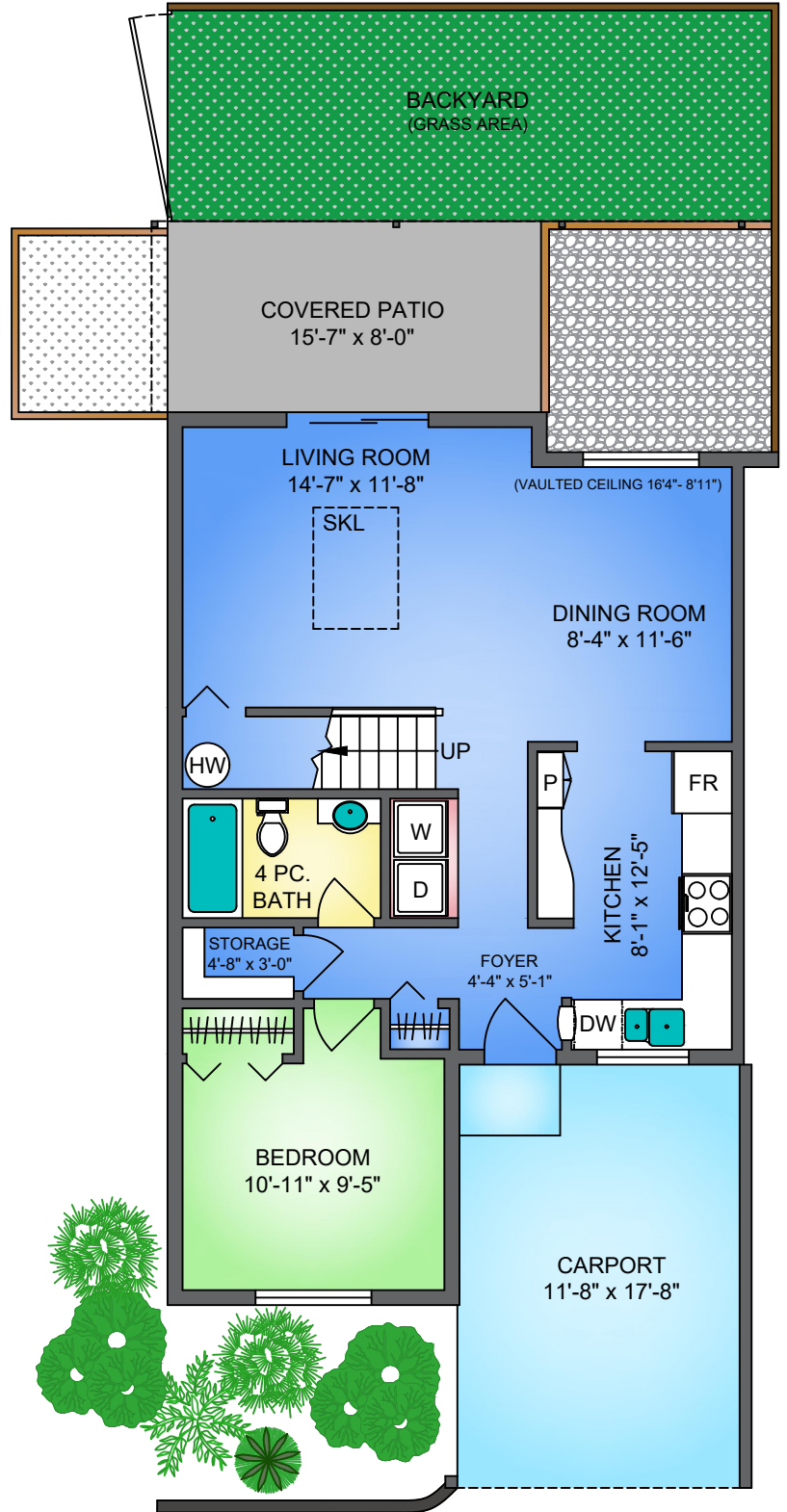
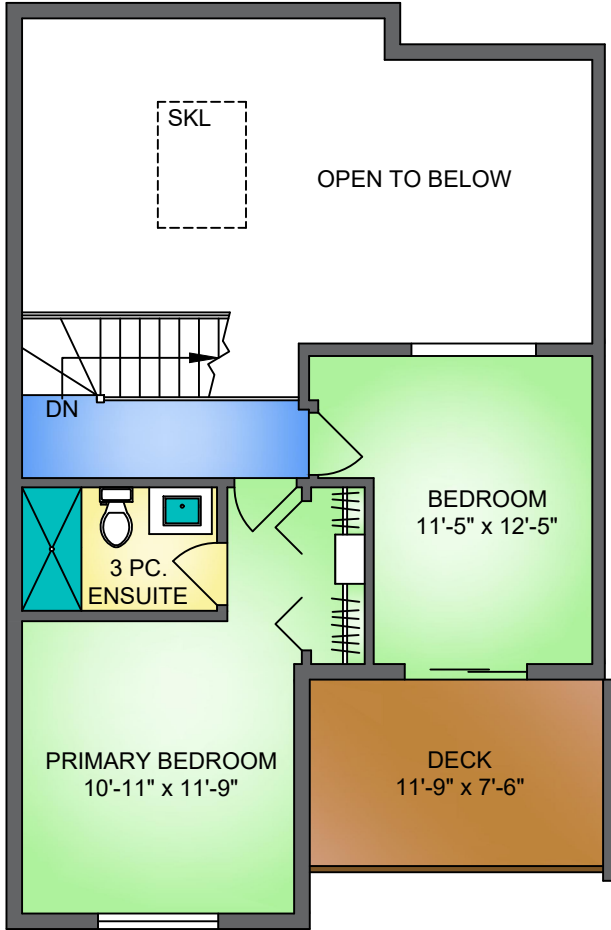


**MAIN FLOOR**  
**733 SQ. FT.**  
**16'4"-8'0" CEILING**

**UPPER FLOOR**  
**443 SQ. FT.**  
**8'0" CEILING**

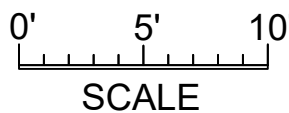


18-12070 207A STREET, MAPLE RIDGE  
 AUGUST 24, 2023

PREPARED BY PROPER MEASURE.  
 FOR THE EXCLUSIVE USE OF KRISTY MATTIAZZO.

PLANS MAY NOT BE 100% ACCURATE. IF CRITICAL BUYER TO VERIFY DIMENSIONS AND MEASUREMENTS ARE APPROXIMATE.

FLOOR	AREA (SQ. FT.)		
	FINISHED	CARPORT	DECK / PATIO
MAIN	733	207	124
UPPER	443	-	88
TOTAL	1176	207	212



NORTH

