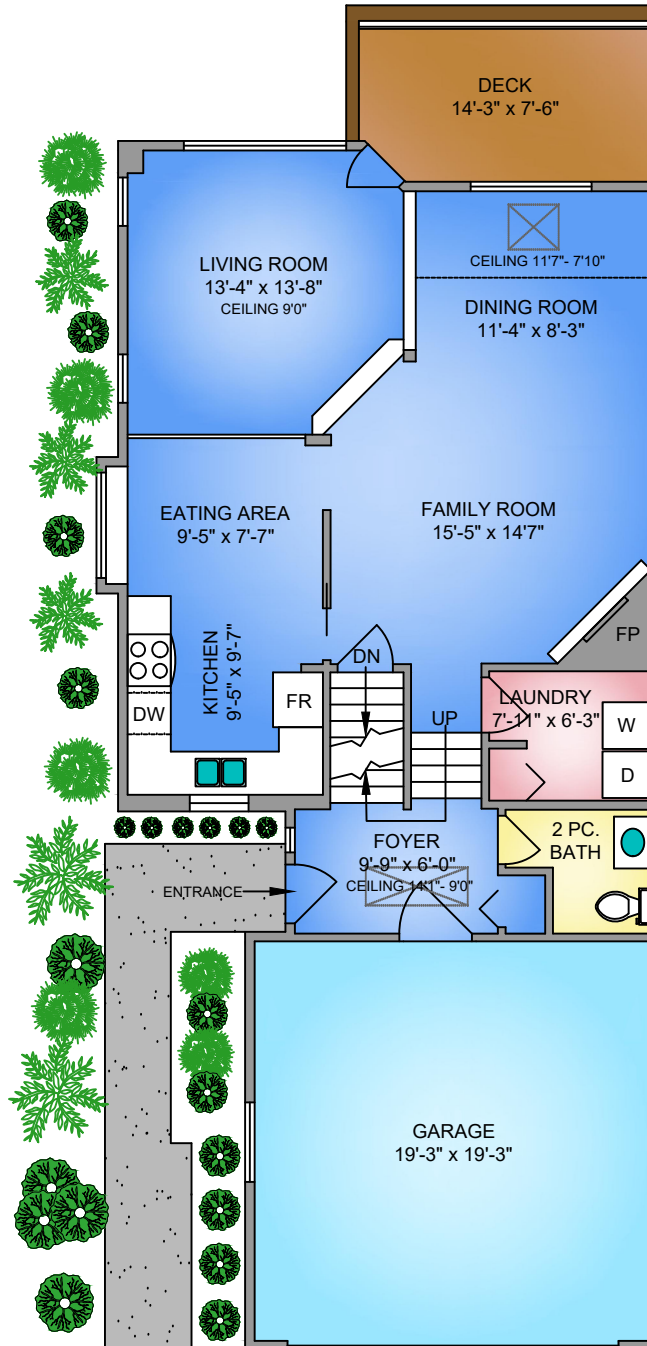
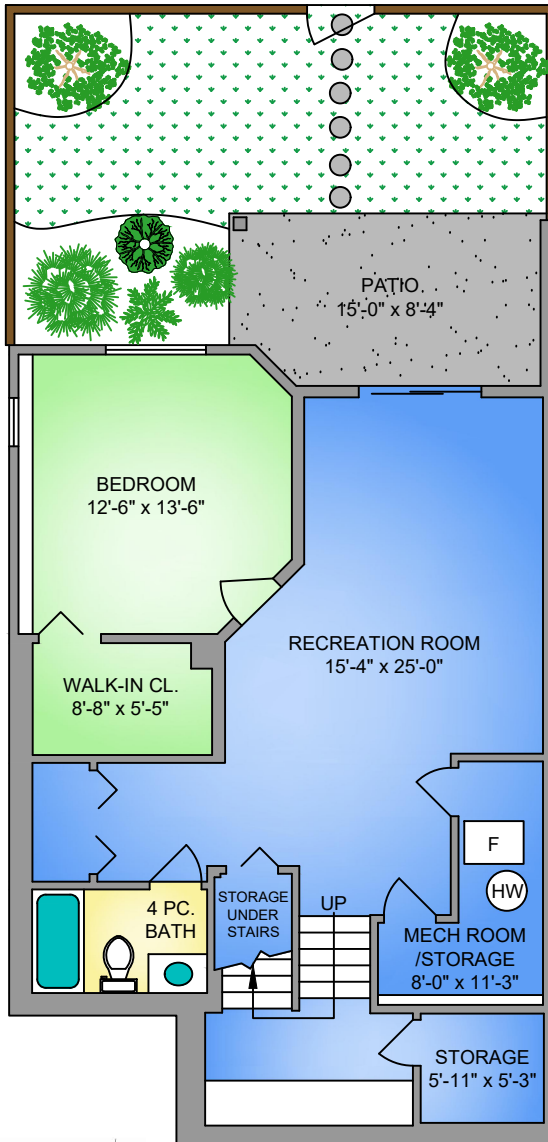
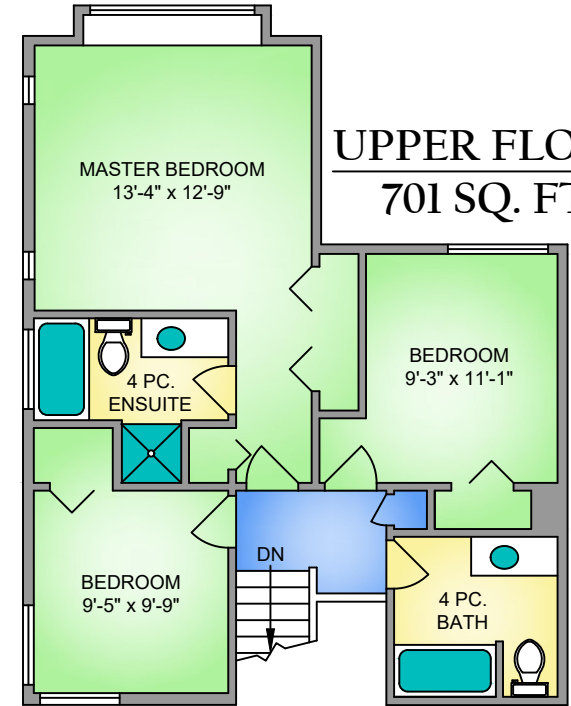


MAIN FLOOR
921 SQ. FT.

LOWER FLOOR
901 SQ. FT.



UPPER FLOOR
701 SQ. FT.



NORTH



0' 5' 10'

SCALE

39-181 RAVINE DRIVE, PORT MOODY
SEPTEMBER 10, 2020

PREPARED BY PROPER MEASURE, FOR THE EXCLUSIVE USE OF KRISTY MATTIAZZO.
PLANS MAY NOT BE 100% ACCURATE, IF CRITICAL BUYER TO VERIFY.
DIMENSIONS AND MEASUREMENTS ARE APPROXIMATE. THE FLOOR PLAN IS NOT INTENDED FOR ARCHITECTURAL OR CONSTRUCTION USE.

| FLOOR | AREA (SQ. FT.) | | |
|--------------|----------------|------------|--------------|
| | FINISHED | GARAGE | DECK / PATIO |
| MAIN | 921 | 387 | 104 |
| LOWER | 901 | - | 120 |
| UPPER | 701 | - | - |
| TOTAL | 2523 | 387 | 224 |