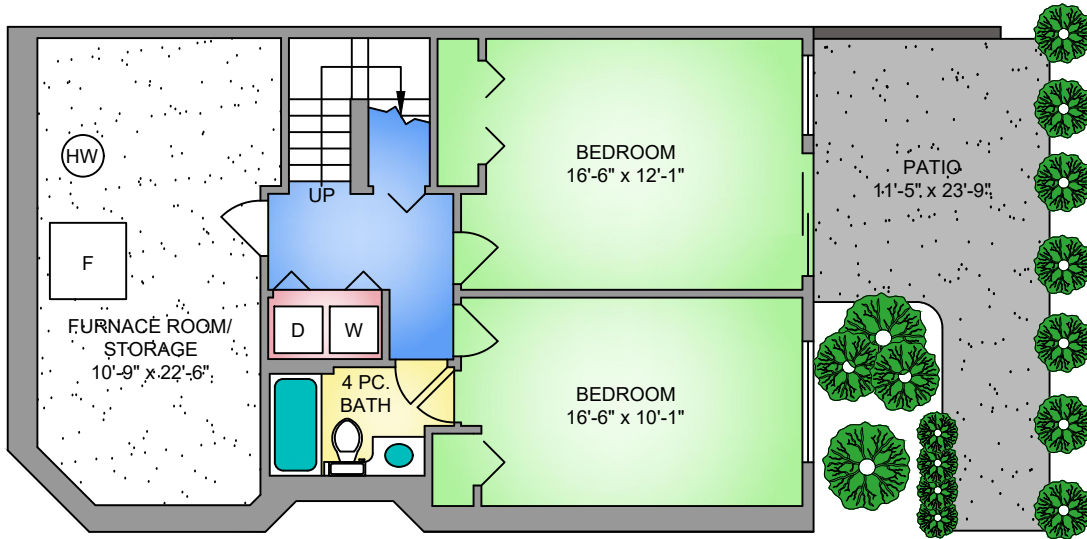


**LOWER FLOOR**

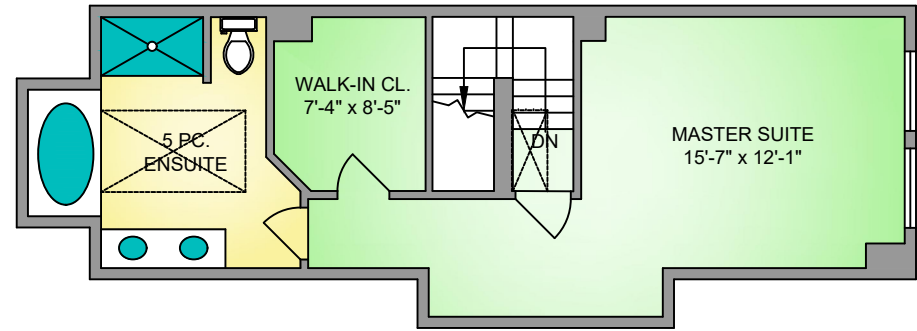
882 SQ. FT.

(FINISHED + UNFINISHED)

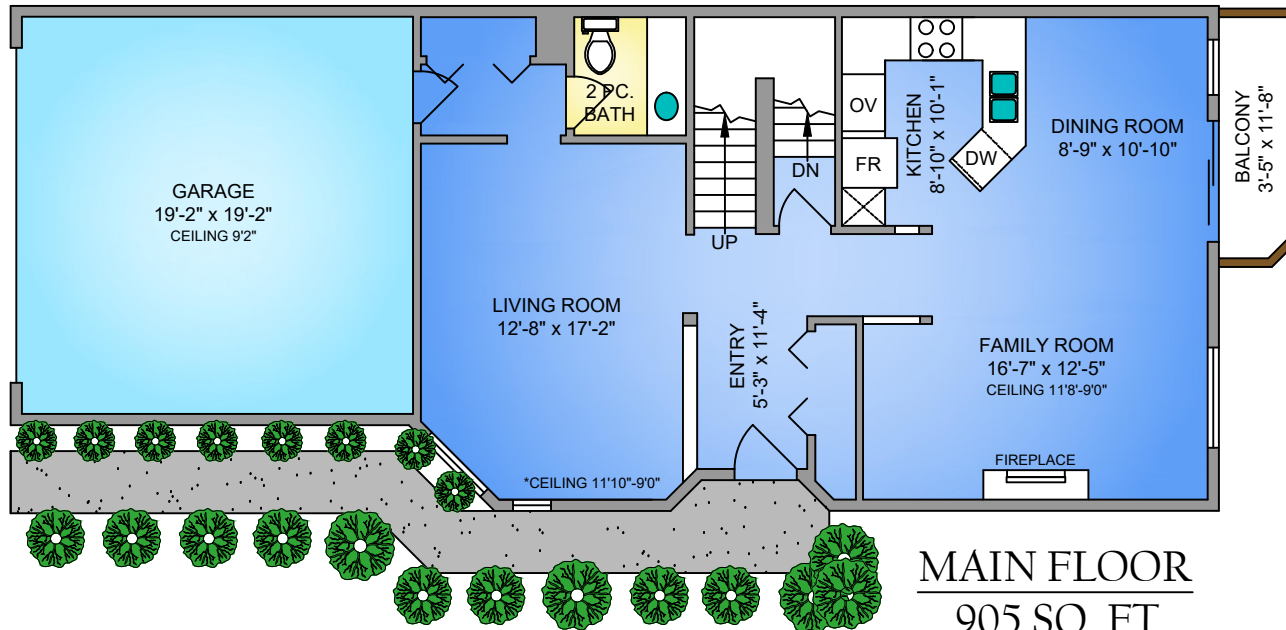
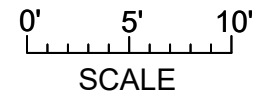


**UPPER FLOOR**

553 SQ. FT.



NORTH



**MAIN FLOOR**

905 SQ. FT.

11'10"-9'0" CEILING

11-2615 FORTRESS STREET, PORT COQUITLAM  
 SEPTEMBER 7, 2018  
 PREPARED BY PROPER MEASURE.  
 FOR THE EXCLUSIVE USE OF KRISTY MATTIAZZO.  
 PLANS MAY NOT BE 100% ACCURATE, IF CRITICAL BUYER TO VERIFY.

FLOOR	AREA (SQ. FT.)			
	FINISHED	UNFINISHED	GARAGE	DECK / PATIO
MAIN	905	-	379	39
LOWER	607	275	-	202
UPPER	553	-	-	-
<b>TOTAL</b>	<b>2065</b>	<b>275</b>	<b>379</b>	<b>241</b>

TOTAL SQ.FT. = 2340